



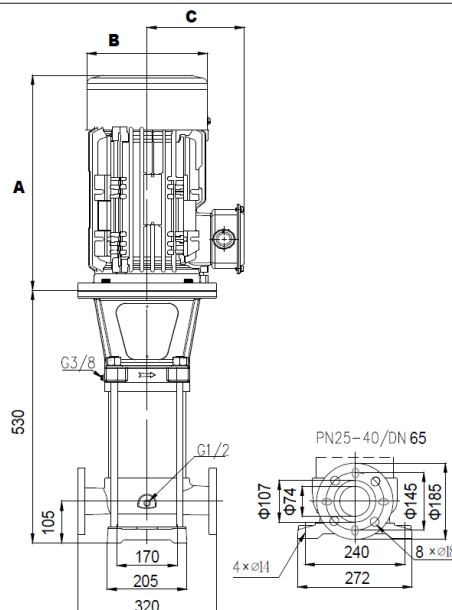
### TECHNICAL DATA

<b>RATED FLOW [M3/H]</b>	32 m <sup>3</sup> /hr
<b>MAX. FLOW</b>	42 m <sup>3</sup> /hr
<b>MAX. HEAD</b>	41.9 m
<b>OPTIMUM OPERATING RANGE</b>	16m <sup>3</sup> /hr @ 42.3m 58.4% eff
	42m <sup>3</sup> /hr @ 29.3m 69.5% eff
<b>WORKING AIR TEMP</b>	0°C – 40°C
<b>LIQUID TEMPERATURE</b>	-15°C – 120°C
<b>HIGHEST EFFICIENCY</b>	73.2%
<b>MAXIMUM PUMP PRESSURE</b>	37 bar
<b>NET WEIGHT (KG)</b>	86.6 kg

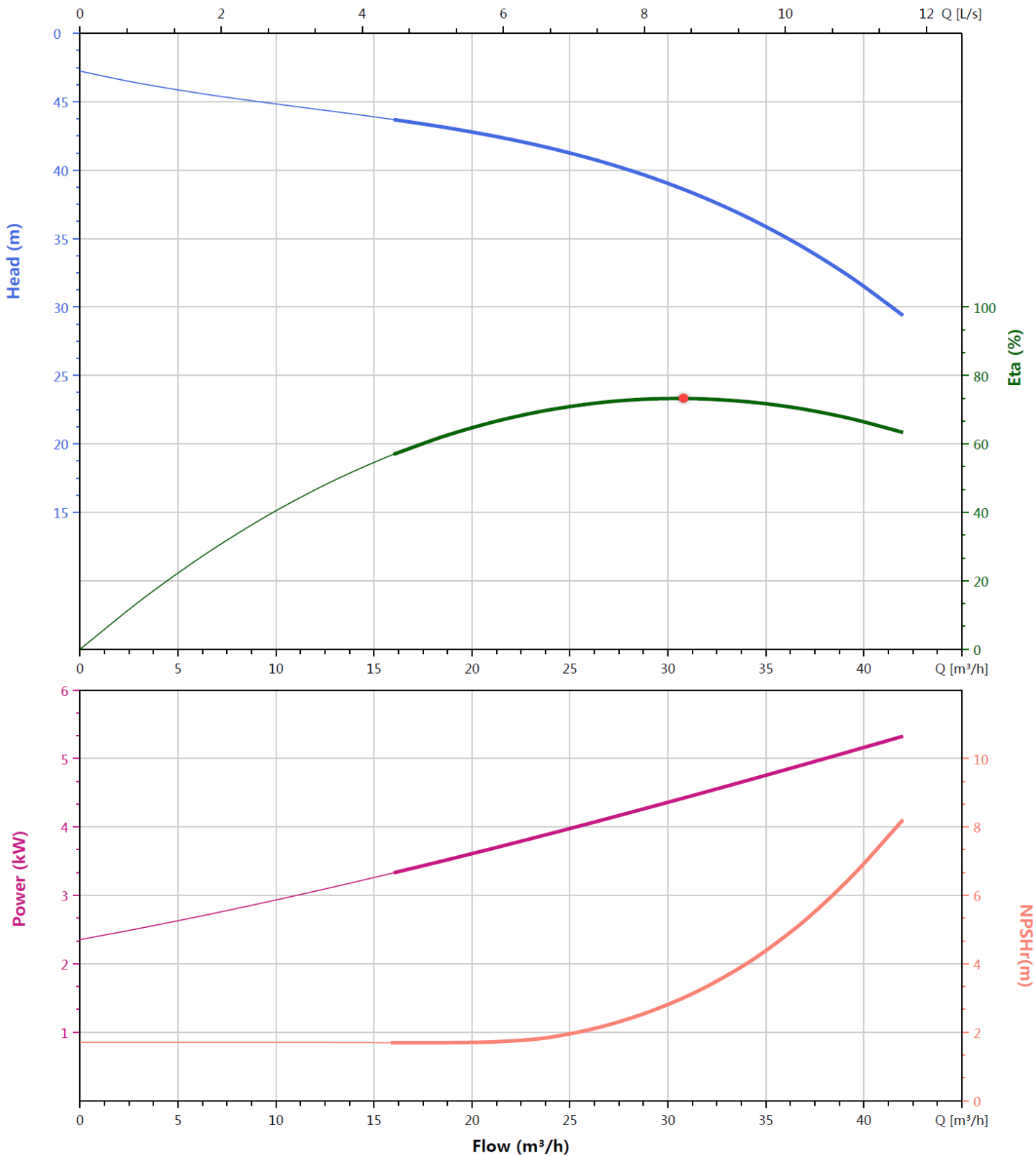
<b>RATED VOLTAGE</b>	Three phase 415V +10% -6%
<b>RATED CURRENT</b>	10.6 A
<b>POWER (KW)</b>	5.5kW 2-pole
<b>MOTOR IP RATING</b>	IP55
<b>MOTOR INSULATION</b>	Class F
<b>MOTOR EFFICIENCY STD</b>	I.E.3
<b>MOTOR EFFICIENCY</b>	90.1%
<b>COS Ø</b>	0.88
<b>MECHANICAL SEAL</b>	SVH-L-22
<b>OUTLET DIN FLANGE</b>	DN65

### DIMENSIONS

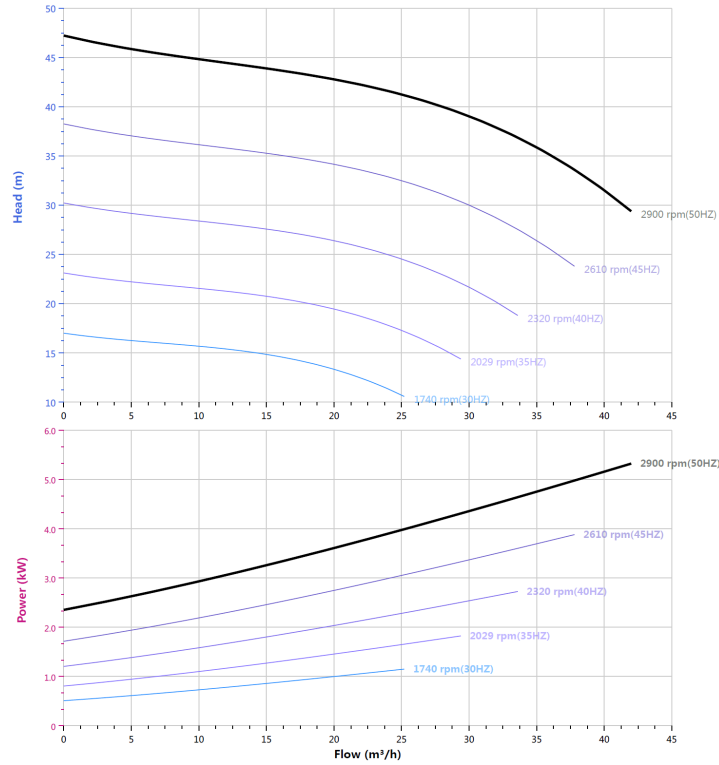
<b>HEIGHT A</b>	414
<b>DIAMETER B</b>	259
<b>RADIUS C</b>	192



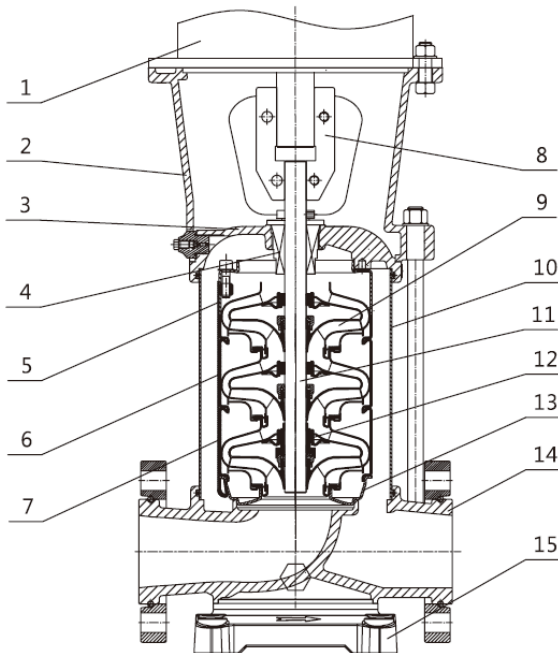
**HYDRAULIC CURVE**



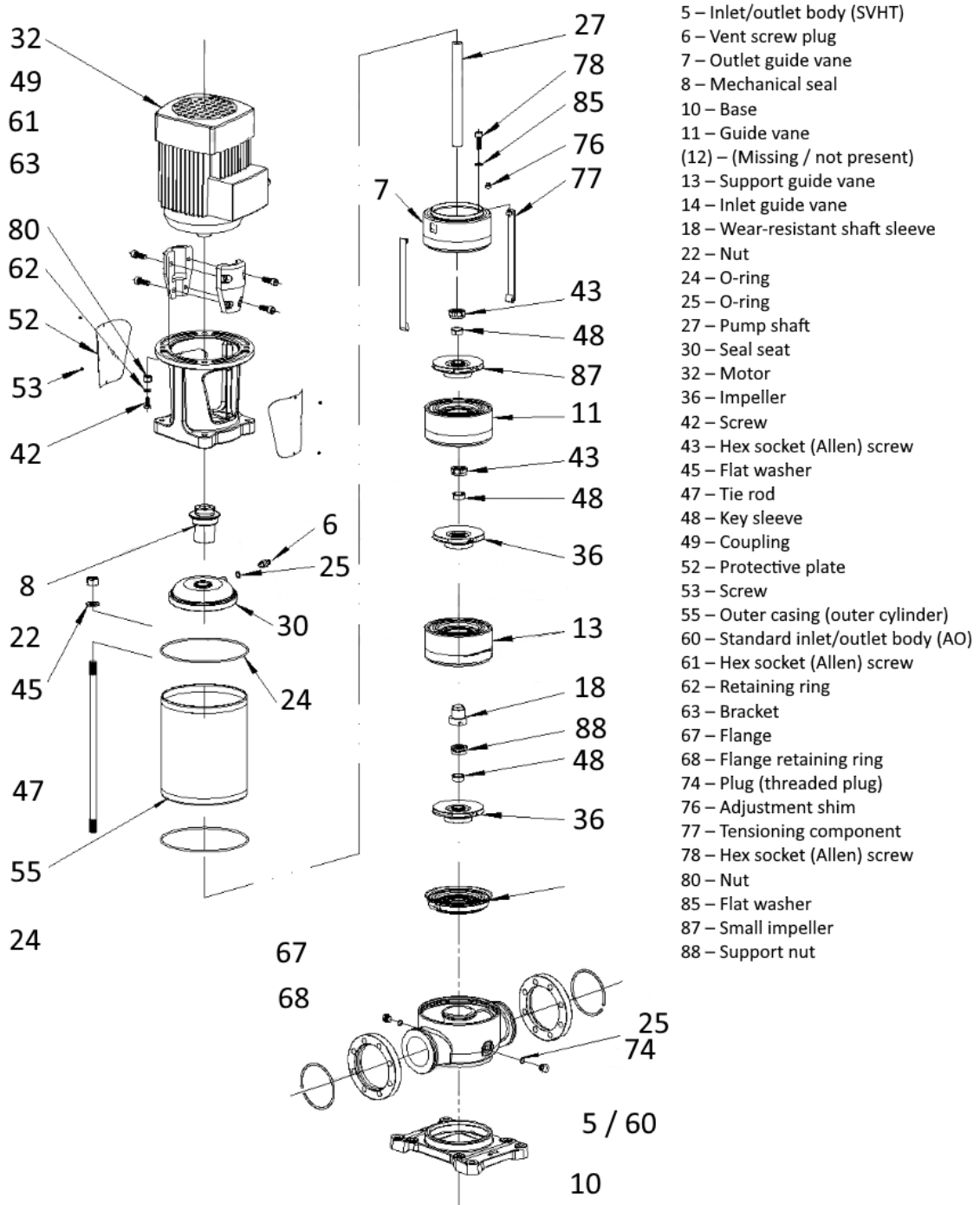
### VFD CURVE



### CUTAWAY



1	Motor	/
2	Bracket	Ductile Cast Iron
3	Seal Base	Stainless / Ductile Cast Iron
4	Mechanical Seal	SVH-L-22
5	Top Diffuser	Stainless Steel
6	Diffuser	Stainless Steel
7	Support Diffuser	Stainless Steel
8	Coupling	Stainless Steel
9	Impeller	Stainless Steel
10	Cylinder	Stainless Steel
11	Shaft	Stainless Steel
12	Intermediate Bearing	SiC / WC
13	Inducer	Stainless Steel
14	Inlet/Outlet Chamber	Stainless Steel / Ductile Cast Iron
15	Base	Ductile Cast Iron



**WARRANTY / CERTIFICATIONS**

